

# Rekor Scout™

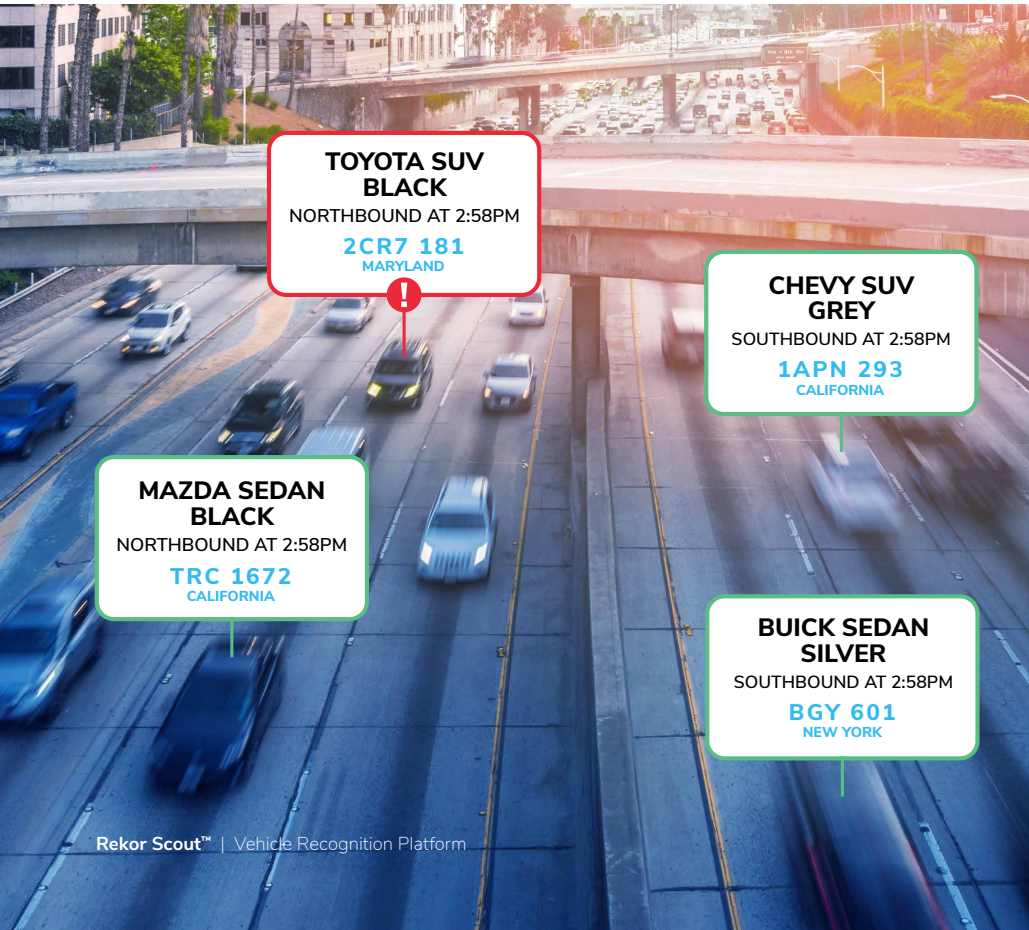
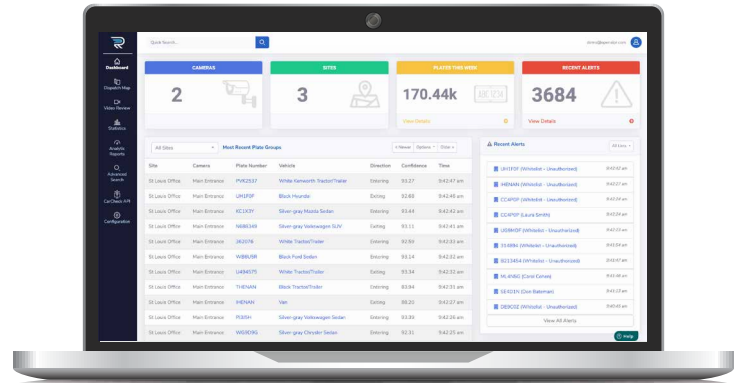
## VEHICLE RECOGNITION PLATFORM

Scout enables accurate license plate and vehicle recognition on nearly any IP, traffic, or security camera. Detection results from all connected cameras are displayed in a full-featured, searchable web app which can be accessed from any browser on any operating system.

**“Rekor has become the new standard in LPR technology for Westchester, NY.”**



- Lt. Brian Hess  
Westchester County, New York PD



**TOYOTA SUV  
BLACK**  
NORTHBOUND AT 2:58PM  
**2CR7 181**  
MARYLAND

**CHEVY SUV  
GREY**  
SOUTHBOUND AT 2:58PM  
**1APN 293**  
CALIFORNIA

**MAZDA SEDAN  
BLACK**  
NORTHBOUND AT 2:58PM  
**TRC 1672**  
CALIFORNIA

**BUICK SEDAN  
SILVER**  
SOUTHBOUND AT 2:58PM  
**BGY 601**  
NEW YORK

## Leading Features

- Retrieve plate number with vehicle characteristics (make, model, color, and more)
- Unlimited users for dashboard
- Customizable alerts sent via email, SMS, or directly in app
- Flexible data retention and sharing
- Programmable hotlists (NCIC, AMBER Alerts, Silver Alerts, shared lists, and more)
- Search for vehicles based on partial plates or vehicle characteristics
- Free access to Rekor Public Safety Network

## STATE-OF-THE-ART ALPR

- Extreme AI accuracy based on years of machine learning
- Provides vehicle make, model, color, direction of travel, and more
- Identifies issuing state or province for entirety of US, Canada, and Mexico
- Recognizes vehicles and license plates in over 70 countries

## ADVANCED INSIGHTS

- Pinpoint high-risk locations with city-wide security and analytics
- Identify unauthorized and vehicles of interest
- Monitor entry and exit location activity
- Image verification to confirm license plate and vehicle results
- Searchable database and historical graphs

## SECURE INFORMATION

- Secure data sharing and access control options via API, Rekor Public Safety Network (RPSN) and federated search
- Policy driven retention profiles gives complete control to the agency
- Multiple user accounts with different access roles
- Available both on-premises and in the cloud
- Access historical vehicle data to accelerate investigations

## MAXIMIZE EFFICIENCY

- Real-time alerts sent the moment a vehicle of interest is detected
- Customizable alerts (hotlists, NCIC, AMBER alerts, Silver alerts, and more)
- Search historic data to find matching vehicles
- Force multiplier to enhance efficiency and reduce frequency of in-person patrols
- Review high-quality video clip of vehicle detection

## COST EFFECTIVE

- Reuse existing IP, traffic, and security cameras for LPR
- Significantly more accurate and affordable than legacy OCR solutions
- Process multiple camera feeds at once for virtual geofence around your city
- Distribute processing across multiple servers for large-scale deployments

## Used by All, Trusted by Law Enforcement



Mt. Juliet, TN  
Police Department



Lancaster, PA  
Police Department



Westminster, CO  
Police Department



Westchester County, NY  
Police Department



Lauderhill, FL  
Police Department



Hartford, CT  
Police Department



Free trial at [openalpr.com](https://openalpr.com)

[www.rekor.ai](https://www.rekor.ai) 410.762.0800