

# Rekor Edge Series

## MOUNTABLE VEHICLE & LICENSE PLATE RECOGNITION

Rekor Edge Series is a family of vehicle recognition systems that seamlessly captures and processes vehicle data, on-device. Three different models are available depending on read distance, traffic speed, and lane coverage needs. Each can easily mount to a building or pole and optional solar power mean there's an Edge for any environment.



## FEATURES AND FUNCTIONS



### OPERATION READY

- On-device video processing
- 1920 x 1080 HD Camera(s)
- Capture speeds up to 120 mph
- Cover 1-6 lanes and 300 ft max range
- Easily mount to a pole or surface for quick installation



### STATE-OF-THE-ART RECOGNITION

- Advanced vehicle recognition with plate, make, type, color, and direction of travel
- Accurate in day/night and all-weather conditions
- Read paper, temporary, and vanity plates
- Real-time alerting



### POWERFUL PERFORMANCE

- Outdoor rated, IP66, NEMA4
- 4G LTE, Ethernet ready
- Rekor Scout™ ready\*\*
- Scout dashboard available in the cloud or on-premise
- Optional solar power and/or pole

\*Coverage varies by Edge device. See specs on next page for coverage.

\*\*Rekor Scout™ is a proprietary software platform for accessing and analyzing Edge captured vehicle data.

# REKOR EDGE SERIES SPECIFICATIONS

## Usage and coverage\*

	Edge 70	Edge 300	Edge 300 Dual
<b>Recommended usage:</b>	Business districts, local roads, campuses, residential streets, drive-thrus, parking lots	Highways, Primary Roads	Large Interstates, Freeways, and Intersections
<b>Lane coverage:</b>	1-2 lanes	3-4 lanes	4-6 lanes
<b>Distance:</b>	175 ft max	300 ft max	300 ft max
<b>Speed:</b>	70 mph max	120 mph max	120 mph max

## Camera specifications

<b>Camera resolution:</b>	1920 x 1080 HDTV 1080p
<b>Image compression:</b>	JPEG
<b>Video streaming:</b>	H.264
<b>Network security:</b>	Password, IP address filtering
<b>IR illumination:</b>	Optimized IR w/power efficient, long-life 850 nm IR LED's

## Communications

<b>Communications:</b>	Ethernet, Cellular Modem
<b>Cellular modem:</b>	3G, 4G LTE MIMO
<b>Cellular service:</b>	Optional
<b>GPS:</b>	Included
<b>Security:</b>	SSL over websockets & HTTPs

## Mount and power

<b>Mounting style:</b>	Surface or Pole
<b>Input voltage range:</b>	9 VDC - 48 VDC
<b>Power consumption:</b>	Average: 18W, Max: 22W

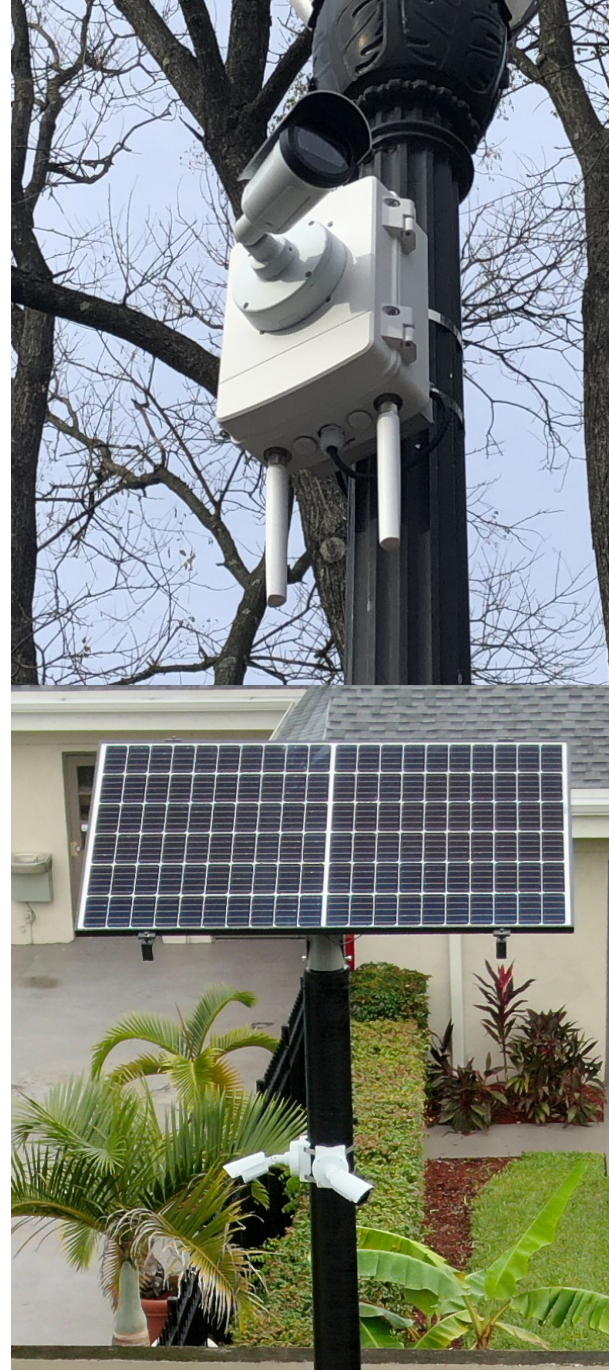
## Available accessories (additional charges apply)

<b>Mounting pole:</b>	19.6 ft   above ground: 14 ft, depth: 5-6 ft
<b>Solar power:</b>	39x66x1.3 in array

## Environmental specifications

<b>Enclosure:</b>	Diecast aluminum, IP66
<b>Operational temperature:</b>	-22°F to 131°F
<b>Storage temperature:</b>	-40°F to 149°F
<b>Warranty:</b>	5-year repair/replace

\*Coverage up to. Actual performance may vary.



Ready to get started?

Contact [sales@rekor.ai](mailto:sales@rekor.ai)

[www.rekor.ai](http://www.rekor.ai) 410.762.0800